

# TOKISTAR TokiLux



TOKISTAR LIGHTING



# TokiLux™

TokiLux is a compact high-performance LED luminaire for use within tight architectural details and in a variety of casework and shelf conditions. Color temperatures of 2400K, 3000K and 4500K are available to complement any environment.

TokiLux consumes only 6 Watts per foot, operates from 24 VAC transformers and is fully dimmable. The remarkable life ratings of our LEDs and replaceable Light Bars ensure the system will provide years of continuous service.



The system's low-operating temperature is perfectly suited for illuminating heat sensitive objects.



## Specify by Catalog Number

### TLX - WW

LED				
Code	Lumens Per Watt	Lumens Per Foot	CRI Value	Kelvin
<b>WW</b>	27.5	165 Lm	85	2400K
<b>IW</b>	42.5	255 Lm	85	3000K
<b>NW</b>	47.5	285 Lm	85	4500K



TokiLux provides a warm accent from beneath this cantilevered edge.

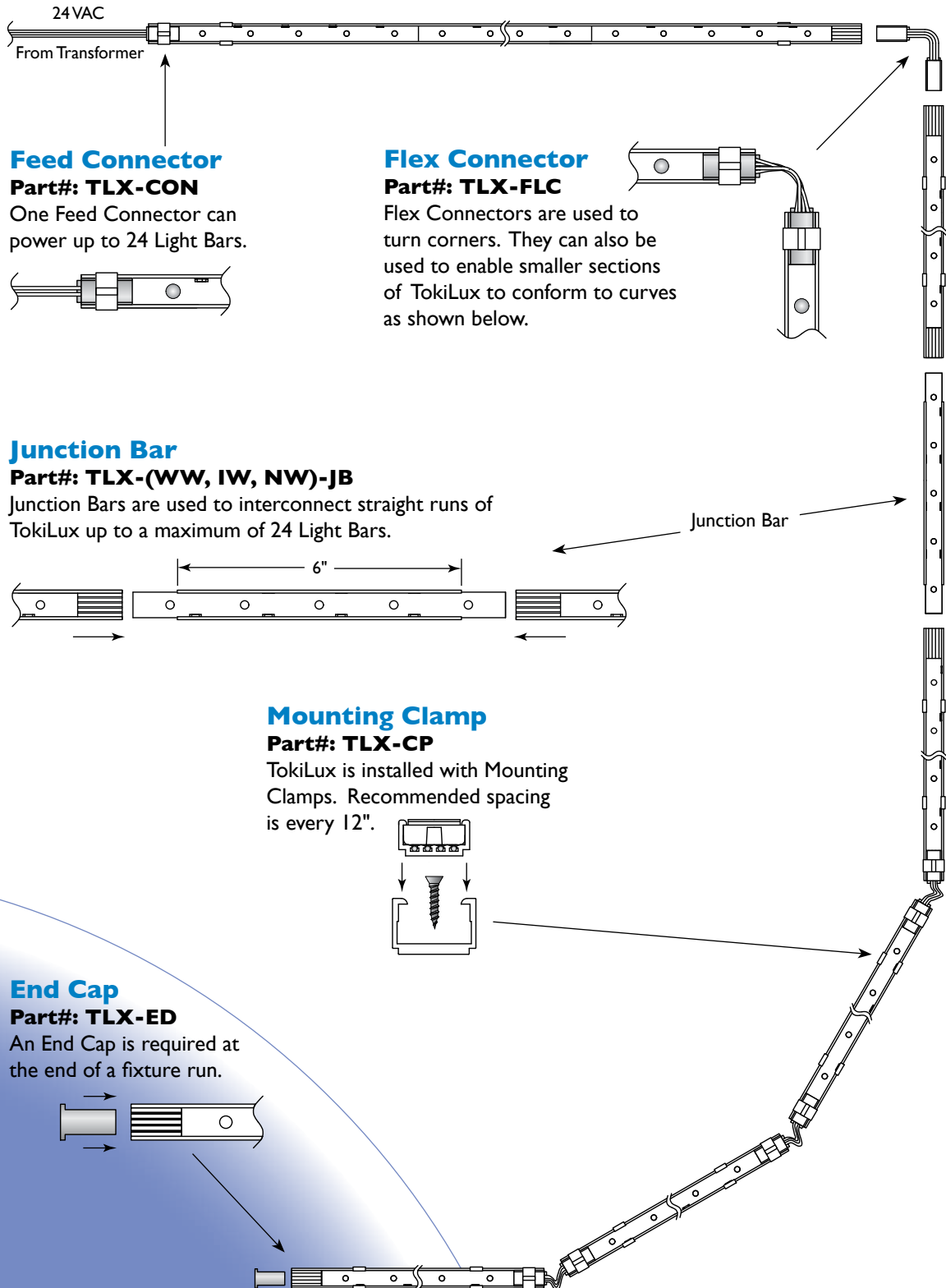
Cover: TokiLux 2400K illuminates distinctive wall panels.  
Photo courtesy of Hashimoto Yukio Design Studio



TokiLux higher output and CRI values are ideal for applications in showcase lighting.

# System Overview

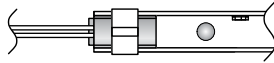
TokiLux fixtures come with Light Bars inserted into a track. A single track can have up to 12 Light Bars. Multiple tracks can be interconnected with up to 24 Light Bars. The graphic below includes TokiLux with associated components. The system operates from 24 VAC magnetic transformers.



### Feed Connector

**Part#: TLX-CON**

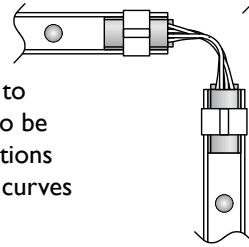
One Feed Connector can power up to 24 Light Bars.



### Flex Connector

**Part#: TLX-FLC**

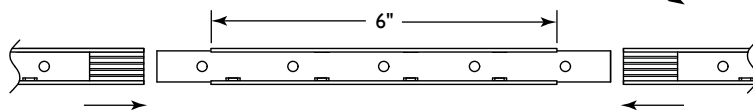
Flex Connectors are used to turn corners. They can also be used to enable smaller sections of TokiLux to conform to curves as shown below.



### Junction Bar

**Part#: TLX-(WW, IW, NW)-JB**

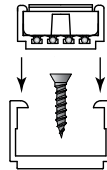
Junction Bars are used to interconnect straight runs of TokiLux up to a maximum of 24 Light Bars.



### Mounting Clamp

**Part#: TLX-CP**

TokiLux is installed with Mounting Clamps. Recommended spacing is every 12".



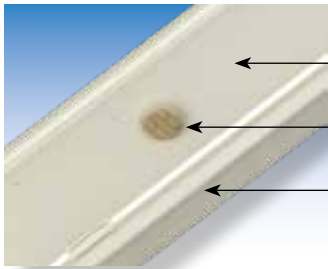
### End Cap

**Part#: TLX-ED**

An End Cap is required at the end of a fixture run.



# Specifications

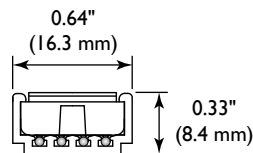


- ← **Light Bars** are rigid polycarbonate 7 7/8" (200 mm) long
- ← **Light Sources** are 0.80 Watt LEDs (5 per Light Bar)
- ← **TokiLux Track** is rigid polycarbonate up to 96 1/2" (2.45 M) long

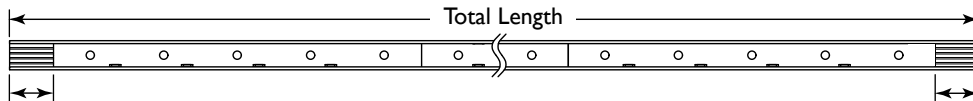


# Sizes and Lengths

Lengths shown in the chart to the right include space at the ends of each track to accommodate Connectors, Junction Bars or End Caps. Spacing of the LEDs is consistent throughout the system creating a uniform lighting effect.

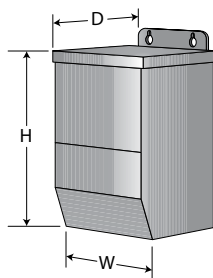


Part Number	No. of Bars	Length	Watts / Volts
TLX-(WW, IW, NW)-1	1	9 7/8"	4.0 W / 24 VAC
TLX-(WW, IW, NW)-2	2	17 3/4"	8.0 W / 24 VAC
TLX-(WW, IW, NW)-3	3	25 5/8"	12.0 W / 24 VAC
TLX-(WW, IW, NW)-4	4	33 1/2"	16.0 W / 24 VAC
TLX-(WW, IW, NW)-5	5	41 3/8"	20.0 W / 24 VAC
TLX-(WW, IW, NW)-6	6	49 1/4"	24.0 W / 24 VAC
TLX-(WW, IW, NW)-7	7	57 1/8"	28.0 W / 24 VAC
TLX-(WW, IW, NW)-8	8	65"	32.0 W / 24 VAC
TLX-(WW, IW, NW)-9	9	72 7/8"	36.0 W / 24 VAC
TLX-(WW, IW, NW)-10	10	80 3/4"	40.0 W / 24 VAC
TLX-(WW, IW, NW)-11	11	88 5/8"	44.0 W / 24 VAC
TLX-(WW, IW, NW)-12	12	96 1/2"	48.0 W / 24 VAC



# Transformers

TokiLux operates from 24 VAC magnetic transformers. Tokistar Class 2 transformers require a 120 VAC/60 Hz input and are fully dimmable. Each transformer output has inherent circuit protection. Consult factory on other input voltages.



Class 2 - 24 Volt						
Part Number	Outputs	D	H	W	Weight	
C2-40-24V	1 @ 40 Watt / 24 VAC	2.25"	5.75"	2.25"	2 lbs	
C2-96-24V	1 @ 96 Watt / 24 VAC	2.5"	6.5"	3.0"	3 lbs	
C2-192-24V	2 @ 96 Watt / 24 VAC	5.0"	7.0"	5.0"	12 lbs	
C2-288-24V	3 @ 96 Watt / 24 VAC	5.0"	7.0"	5.0"	12 lbs	
C2-480-24V	5 @ 96 Watt / 24 VAC	6.0"	8.0"	6.0"	20 lbs	

## TOKISTAR® LIGHTING INC.

1015 E. Discovery Lane • Anaheim, CA 92801

Tel: 714.772.7005 • Fax: 714.772.7014 • Toll free in U.S.A.: 877.340.7633  
 E-mail: info@tokistar.com • Web site: www.tokistar.com